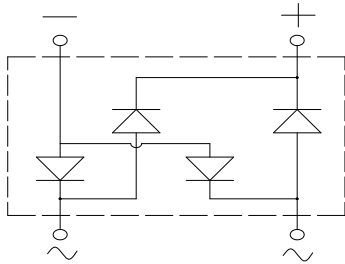
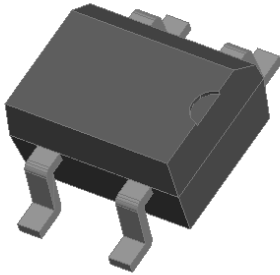


Bridge Rectifiers



Features

- UL recognition, file #E313149
- Ideal for automated placement
- High surge current capability
- Meets MSL level 1, per J-STD-020, LF maximum peak of 260 °C

Typical Applications

General purpose use in AC/DC bridge full wave rectification for power supply, lighting ballast, battery charger, home appliances, office equipment, and telecommunication applications.

Mechanical Data

- **Package:** MBS
Molding compound meets UL 94 V-0 flammability rating, RoHS-compliant
- **Terminals:** Tin plated leads, solderable per J-STD-002 and JESD22-B102
- **Polarity:** As marked on body

■ Maximum Ratings ($T_a=25^\circ\text{C}$ Unless otherwise specified)

PARAMETER	SYMBOL	UNIT	B1S	B2S	B4S	B6S	B8S	B10S
Device marking code			B1S	B2S	B4S	B6S	B8S	B10S
Repetitive peak reverse voltage	VRRM	V	100	200	400	600	800	1000
Average rectified output current @60Hz sine wave, R-load, $T_a=40^\circ\text{C}$	On alumina substrate	I_o	A	0.8				
	On glass-epoxy substrate			0.5				
Surge(non-repetitive)forward current @60Hz half sine wave, 1 cycle, $T_j=25^\circ\text{C}$	IFSM	A	30					
Current squared time @1ms≤t≤8.3ms $T_j=25^\circ\text{C}$, rating of per diode	I^2t	A ² s	3.7					
Storage temperature	Tstg	°C	-55 ~ +150					
Junction temperature	T_j	°C	-55 ~ +150					

■ Electrical Characteristics ($T_a=25^\circ\text{C}$ Unless otherwise specified)

PARAMETER	SYMBOL	UNIT	TEST CONDITIONS	B1S	B2S	B4S	B6S	B8S	B10S
Maximum instantaneous forward voltage drop per diode	V_F	V	$I_{FM}=0.4A$	1.00					
Maximum DC reverse current at rated DC blocking voltage per diode	IRRM	μA	$V_{RM}=V_{RRM}$	5					

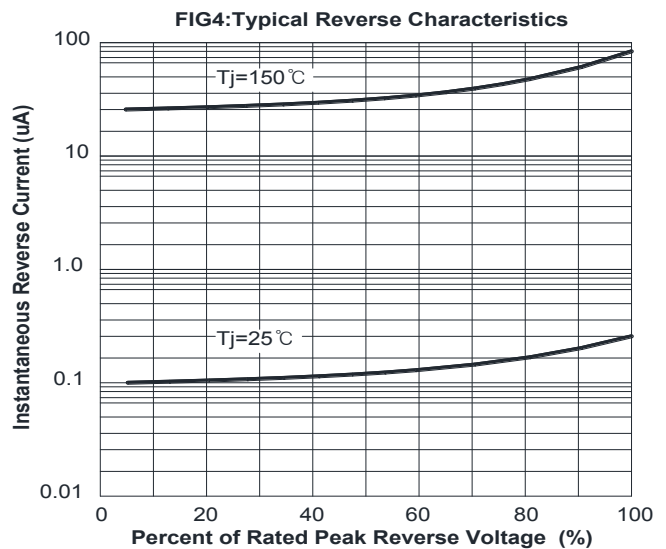
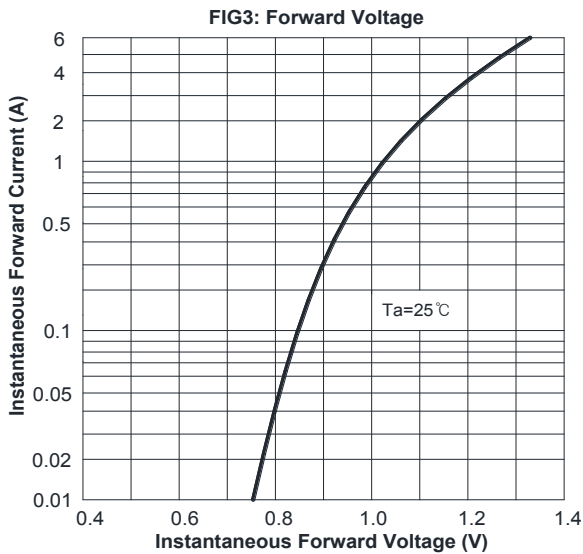
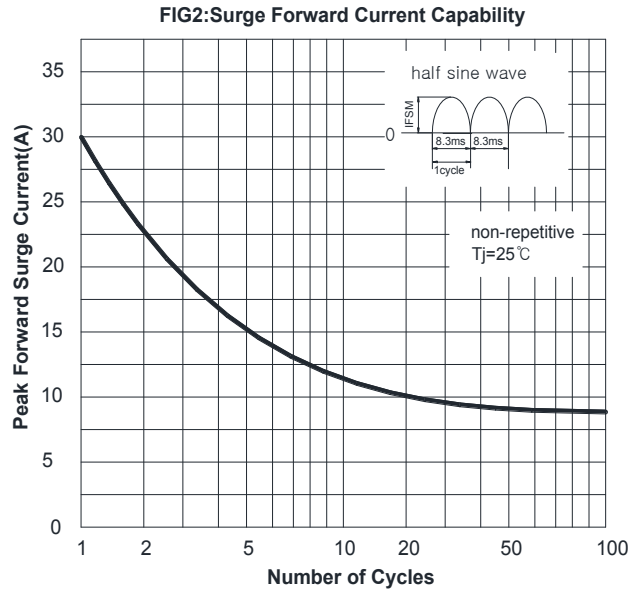
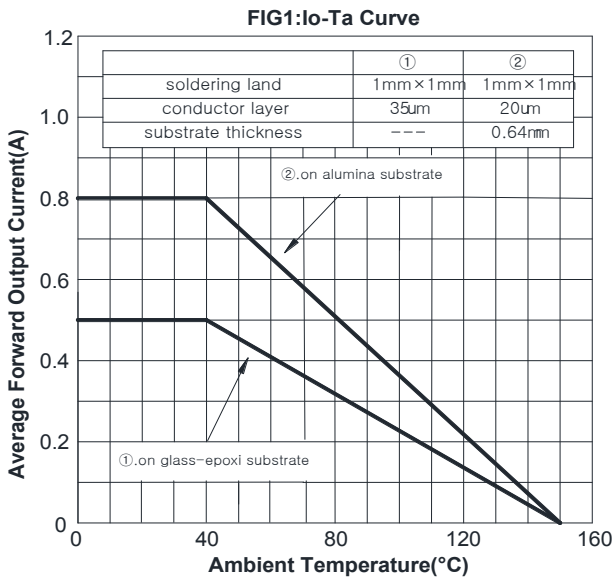
■ Thermal Characteristics (T_a=25°C Unless otherwise specified)

PARAMETER		SYMBOL	UNIT	B1S	B2S	B4S	B6S	B8S	B10S
Thermal Resistance	Between junction and ambient, On alumina substrate	R _{θJA}	°C/W	76.0					
	Between junction and ambient, On glass-epoxi substrate	R _{θJA}		134.0					
	Between junction and lead	R _{θJL}		20.0					

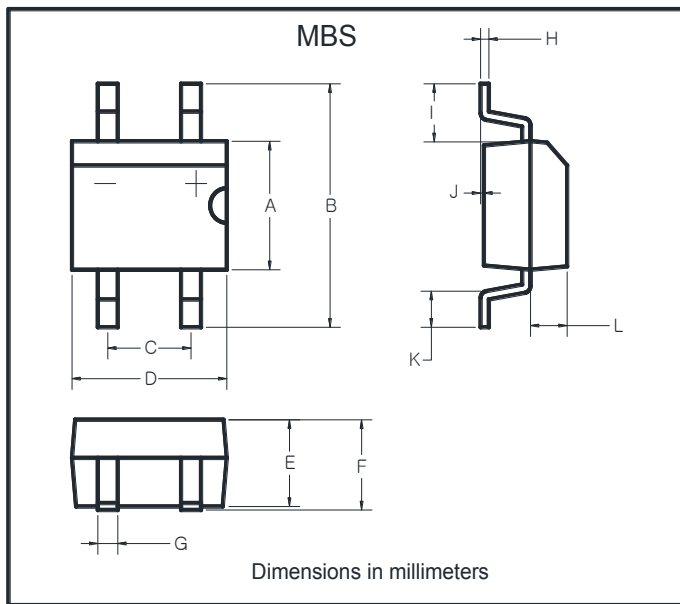
■ Ordering Information (Example)

PREFERRED P/N	PACKING CODE	UNIT WEIGHT(g)	MINIIMUM PACKAGE(pcs)	INNER BOX QUANTITY(pcs)	OUTER CARTON QUANTITY(pcs)	DELIVERY MODE
B1S - B10S	F1	Approximate 0.12	2500	5000	40000	13' reel

■ Characteristics(Typical)

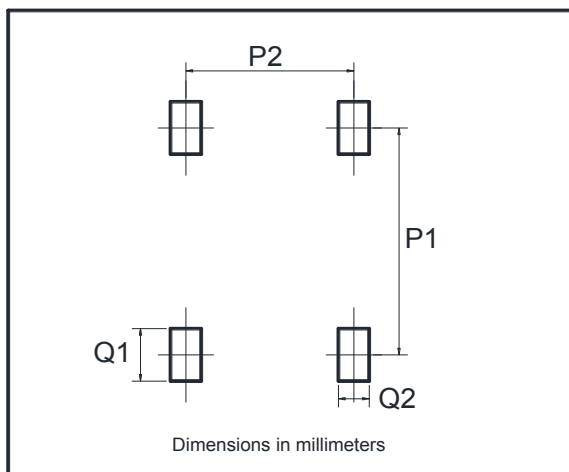


■ Outline Dimensions



MBS		
Dim	Min	Max
A	3.60	4.00
B	7.00 Max	
C	2.20	2.60
D	4.50	4.90
E	2.30	2.70
F	3.00 Max	
G	0.56	0.84
H	0.15	0.35
I	1.10	2.12
J	0.20 Max	
K	0.70	1.10
L	0.95	1.53

■ Suggested pad layout



Dim	Min
P1	6.00
P2	2.40
Q1	1.84
Q2	1.20